

Our associates will ensure the tool works properly before you leave the store. If you experience issues with the tool while completing your project, simply bring it back to the Tool Rental Center to get a replacement. If you purchase Damage Protection at the time of your rental, you are not responsible for repair costs for tools that break due to normal use.



179 SERIES



FEATURES & BENEFITS

"ACCUWAY" Spread Pattern Equalizer
ENSURES spreading dead center of the spreader. (Indicated with "22" in model number)

20 SERIES



Gears are unconditionally guaranteed
ENSURES trouble free operation.

90 SERIES



Dial-A-Matic spread rate control
ENSURES spreading at exact spread rates.

70 SERIES



Optional **BORDER PATROL** spread pattern cut-off prevents spreading on drive-ways, flower beds, etc.

Extension hoppers available for all round hopper spreaders. Adds 20 lbs. to capacity.

Shipped Set-Up. Saves time and labor
ENSURES proper assembly. (except #64)

Stainless steel frames ensure longer spreader life, easier maintenance and present a quality image.

High grade plastic non-corroding wheels with nylon bearings, no lubrication required, **ENSURES** trouble free maintenance.

MODEL 299
Mulch Spreader



P.O. Box 7 • 140 Mill Street • Urbana, IN 46990 USA
1-800-972-6130 • Fax 260-774-3416

SPYKER

THE SPREADER PEOPLE

spread with confidence

For Model:
288 SUPER

Spreading Chart

Operation Guide

Service Manual

Parts List



It's the spread that counts

P.O. Box 7
140 Mill Street
Urbana, IN
46990 USA



1-800-972-6130
Fax: 260-774-3416

**For Quick and Easy Assembly - First Read Entire Procedure
Then Follow Carefully The Step by Step Instructions**

Tools You will Need:

Screwdriver
7/16 Wrench
Pliers



Parts You will Use:

Parts for Model: 288 Super

- (2) Drive/Idle Wheel
- (2) Handle - SS.
- (8) Nut 1/4 - 20
- (4) 1/4 - 20x1-1/2 Bolt
- (4) 1/4 - 20x2-3/4 Bolt

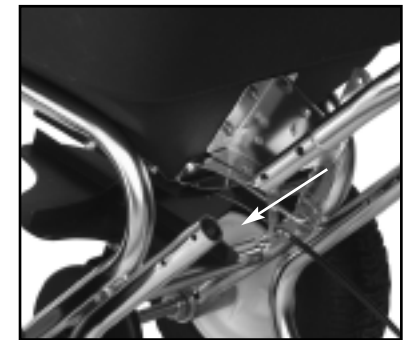
1.

Unpack spreader,
and place on a flat
surface.



2.

Insert handle (40)
into frame.
Then, repeat for
2nd handle.



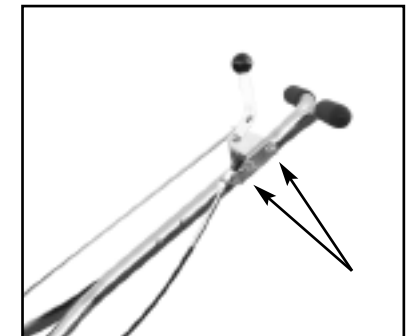
3.

Secure handles to
frame with 2 bolts
(47) and nuts (5).



4.

Insert on/off control
bracket assembly
between the two
handles and secure
with two bolts [41]
and nuts [5].



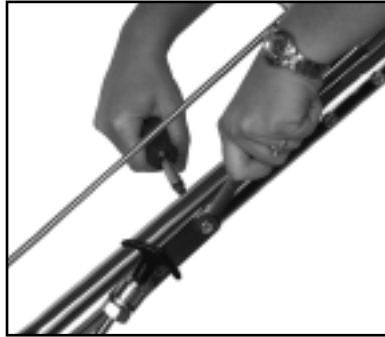
5.

Attach Handle to bracket and secure with one bolt (41) and nut (5).



6.

Attach Accuway lever to left handle with two bolts (41) and nuts (5).



7.

Connect Pivot lever Yoke (68) to Lever rod (69) by threading on about 3 turns. Then insert the clevis of the locking spring clip through yoke & Pivot Lever (61) and flip down to lock.



NOTE: You may need to re-adjust if gate is not completely closed when on/off lever is in the off position.

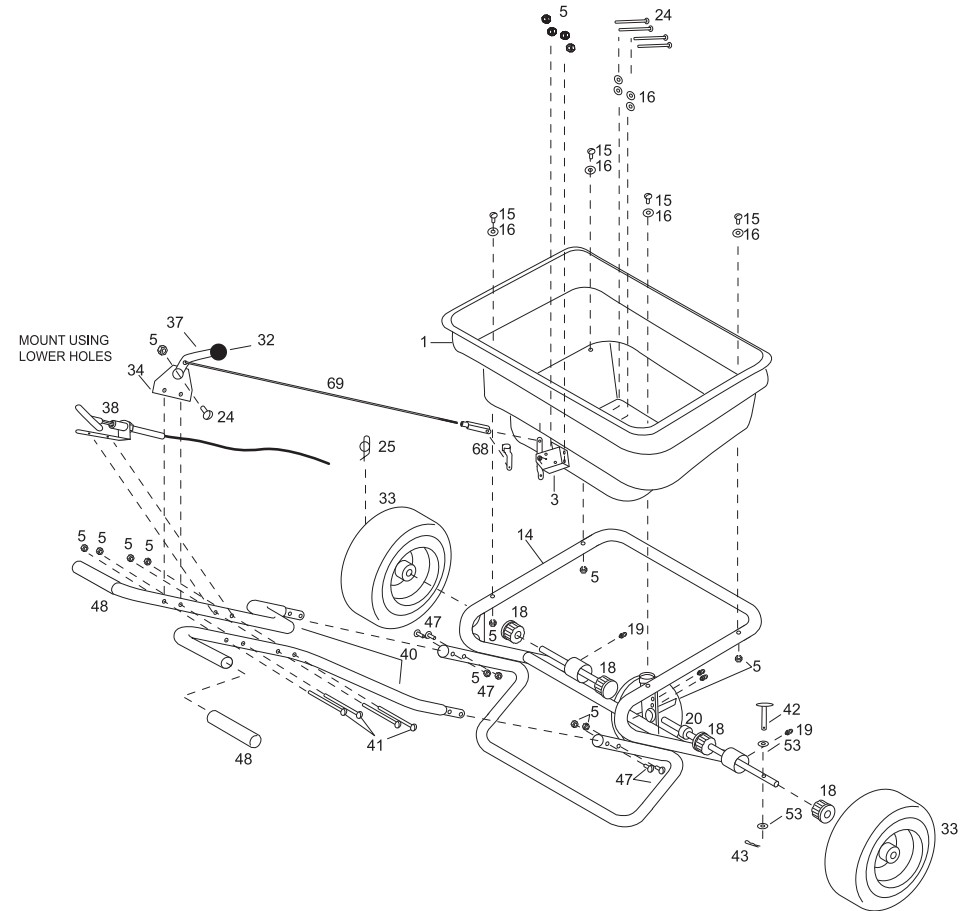
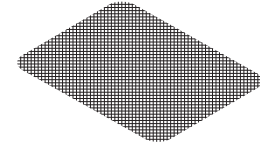
8.

Tighten all bolts.

Spreader assembly complete.



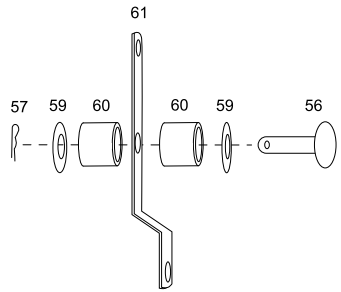
39 Screen



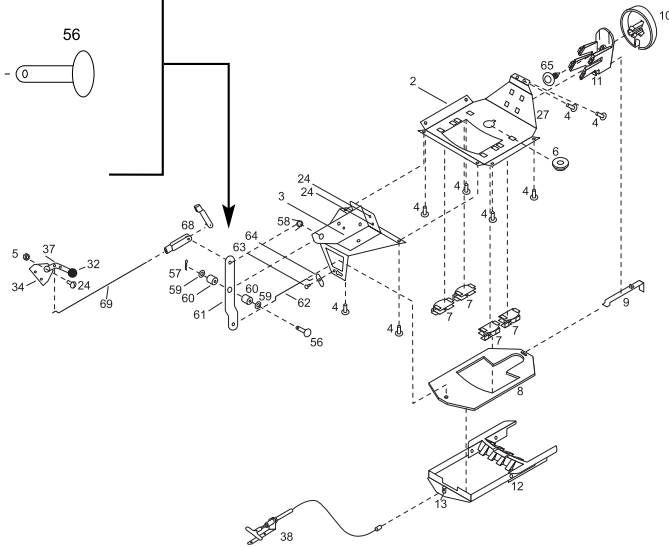
Hopper & Frame Assembly

288 Super

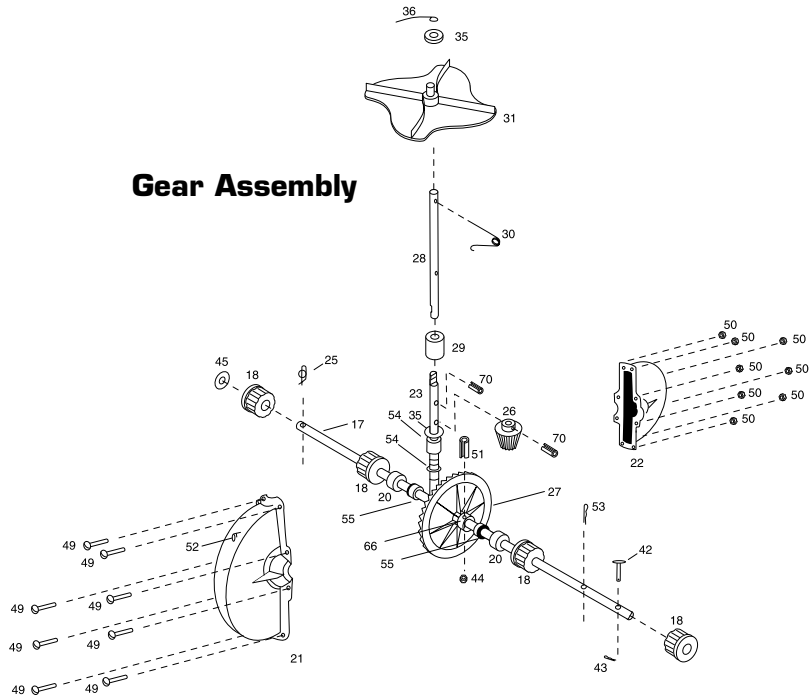
Enlarged View



Rate Gate Assembly



Gear Assembly



Item #	Part #	Quantity	Description
1	05-296-2210	1	Hopper
2	05-296-2215	1	Hopper Bottom Plate
3	05-288-1017	1	Pivot Lever Mount Assembly
4	99-10-0205	8	Hopper Bottom Bolt 1/4-20 X 1/2
5	SS-91-0004	19	Nut
6	SS-94-0007	1	Hopper Bottom Bearing
7	05-94-0042	4	Rate Gate Diffuser Guide
8	05-288-2221	1	Rate Gate
9	05-296-0110	1	Rate Gate Linkage
10	05-296-0131	1	Dial
11	05-94-0069	1	Dial Mount
12	05-296-0175	1	Accuway
13	05-90-0044	1	Cable / Wire Fastener
14	05-288-2220	1	Frame
15	05-90-0016	4	Bolt 1/4-20 X 1-3/4 / Hopper to Frame
16	05-94-0064	8	Nylon Washer
17	05-88-2230	1	Axle
18	05-98-0071	4	Axle Bearing
19	05-98-0051	2	Grease Zerk
20	05-90-0012-R	2	Collar
21	05-94-0037	1	Front Half Gear Box
22	05-94-0038	1	Rear Half Gear Box
23	05-288-0035	1	Lower Spinner Shaft
24	05-90-0051	5	1/4 - 20 x 3/4 Truss Bolt/Pivot Lever Mount/Lever to Lever Mount Bracket
25	05-90-0040	1	Rue Ring/Idle
26	05-94-0034	1	Pinion Gear
27	05-94-0033	1	Bevel Gear
28	05-298-0034	1	Upper Spinner Shaft
29	05-97-0030	1	Coupling / Upper and Lower Spinners Shaft
30	05-97-0036	1	Spinner Clip
31	05-220-0140	1	Spinner
32	05-98-0108	1	Ball Knob for On/Off Lever
33	05-95-0016	2	13" Idle/Drive Wheel
34	05-288-1011	1	On / Off Lever Mount Bracket
35	SS-92-0002	2	Felt Washer
36	SS-297-0003	1	Agitator Wire
37	05-288-1012	1	On / Off Control Lever
38	05-288-1023	1	Accuway Control Assy.
39	05-296-1070	1	Screen
40	05-88-2215	2	Handle
41	05-90-0017	4	Bolt 1/4-20 X 2-3/4 / Handle & Controls
42	05-90-0065	1	Clevis Pin/ Drive Wheel
43	05-90-0039	1	Hair Pin / Drive Wheel
45	05-92-0004	2	Washer, Finishing / Idle Wheel
47	05-90-0054	4	Bolt 1/4-20 X 1-1/2 / Handles to Frame
48	05-94-0072	2	Handle Grip
49	05-90-0097	8	Gear Box Bolt
50	05-91-0008	8	Nuts / Gearbox
51	05-90-0096	1	Roll Pin/Bevel Gear
52	05-98-0111	1	Zirk Fitting for Gear Box
53	05-92-0007	2	Finishing Washer/Drive Pin
54	05-90-0094	2	Small Brass Bushings
55	05-90-0093	2	Large Brass Bushings
56	05-90-0101	1	Clevis Pin / Pivot Lever
57	05-90-0102	2	Hair Pin / Pivot Lever & Pivot Lever Rod Bracket
58	05-98-0107	1	Spring / Pivot Lever
59	05-92-0008	3	SS Washer / Pivot Lever
60	05-92-0014	2	Nylon Washer / Pivot Lever
61	05-288-1014	1	Pivot Lever
62	05-288-1021	1	Pivot Linkage
63	05-90-0055	1	Retainer Screw
64	05-288-1022	1	Retainer
65	05-94-0078	1	Christmas Tree Plug / Dial
66	05-288-1027	1	Pin Retainer Ring / Bevel Gear
68	05-288-1015R	1	Pivot Lever Yoke / w/ Snap Ring
69	05-288-1013	1	Hand Lever Rod
70	SS-90-0001	2	Roll Pin / Pinion Gear / Lower Spinner Shaft

SPEED - ACCURACY - FREEDOM FROM STRIPES AND STREAKS are yours - when you use this Spreader.

The spread width ranges from 4 ft. to 12 ft. wide, depending on the volume/density, particle size of the material and the rate of travel.

The spread thins or feathers at the outer edges, eliminating sharp, "Edge of spread" lines which cause stripes and streaks. Extra coverage can be given under trees and other heavy feeding areas without showing "edge of spread" lines.

Gaps and double overlaps are less likely. Small errors in travel are forgiven and do not show.

WARNING: When spreading products containing herbicides, exercise extreme caution with respect to careless spreading and to wind-drift. CONTACT OF SOME PRODUCTS ON SOME PLANTS CAN BE FATAL.

If a dial setting is not found, use the size and weight comparison table found on the back page.

Determine a dial setting on the low side. If the setting proves to be too low, cover the area more than one time. A higher setting can be used when a proven dial setting is established.

REMEMBER - Published dial settings can be approximate only. The operation of the spreader, the condition of the material (damp or dry or over-pulverized) and weather conditions, are all contributing factors.

For these reasons, it's often a good idea to spread the area 2 times - at one-half rate - in cross directions (SEE INFORMATION ON ONE-HALF RATE DIAL SETTINGS ON REFERENCE CHART ON THE BACK PAGE. SPREADING AT ONE-HALF RATE DIAL SETTINGS IS HIGHLY RECOMMENDED UNDER DAMP & HUMID CONDITIONS.

BECOME FAMILIAR WITH THE OPERATION OF THE SPREADER BEFORE YOU PUT MATERIAL IN THE HOPPER.

Practice walking with the spreader, opening and closing the rate gate at the appropriate times.

Travel at a constant speed and operate the spreader lever position.

Remember: Open the rate gate after the spreader is in motion at operating speed (about 3 mph., or at a brisk walking pace).

Close the rate gate while spreader is **still at operational speed.**

Rotary Agitator

Use the rotary agitator only if needed. Free-flowing, lump-free materials will not require the agitator. The rotary agitator is easily installed or removed. Note the clockwise rotation & sweep. Place felt washer around spinner shaft before inserting agitator.

OIL BEARINGS AND ALL MOVING PARTS

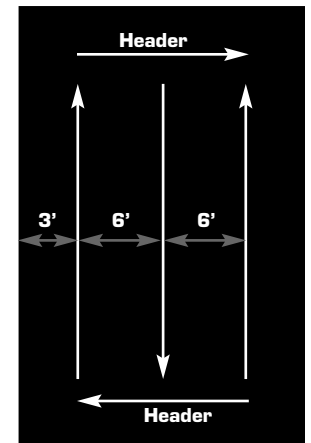
Make certain the spreader is running freely!

Now You are Ready to Put Material in the Hopper

- Make certain the *rate gate* is in closed position.
- As insurance against spill damage and spill loss, put material in the hopper with the spreader on a walk, driveway, paper, plastic, etc.
- The spreader will be easier to use if you only half-fill the hopper. Later on you can fill the hopper if you so choose.
- Or for added capacity, the inverted bag in the hopper can serve as a capacity extension. Also, an extension hopper, complete with filtering and pulverizing screen, is available from the manufacturer.

Now You are Ready to Spread

- Spread header strips at the ends of the area OPPOSITE the direction of spreading. This will provide a "turn-around" area, an area to re-align the spreader for the return spread.
- Example is for 6 ft. wide spread: Make the first spreading pass at one-half the spread width from the edge of the spreading area or in this case approximately 3 feet or one big step.
- Additional spreading passes will be at the full spread width or approximately 6 feet apart.
- TAKE A SIGHTING AT THE FAR END. Keep your eye on the sighting as you spread. You will not need to wonder where you are or where you have been. Continue until spreading is completed.
- Left over fertilizer can be spread under trees and other high feeding areas without showing "edge of spread" lines.



NOTE: With the rotary agitator installed, the rate gate closed (not spreading) and with material in the hopper, the spreader will push harder than normal. (This is because the agitator is stirring the material and it has no place to go.)

RECOMMENDATION: When not spreading and the spreader is being pushed some distance, tip the spreader so only the idle wheel is on the ground.

Cleaning the Spreader is Part of the Spreading Job.

IMMEDIATELY AFTER USE - CLEAN AND OIL THE SPREADER

- **Method #1** - Wipe spreader thoroughly with an oily cloth. Oil all bearings and bearing areas.
- **Method #2** - Wash, rinse, and dry the spreader. Note: Drying takes time. (Moisture trapped in bearing areas is slow to go.) Immediately after drying - oil all bearings and moving parts. Make certain all operations are thorough.

Note: Good "Dry Cleaning" is preferable to poor "Wet Cleaning".
- It is virtually impossible to have rust and corrosion on a clean, dry, oiled surface.
- Again - just before using - oil all bearings and moving parts.
- In storage, ideally the spreader should be hung by the handle. In any case, do not pile weight on the spreader, as excess weight over a period of time can distort the tires.

Grass Seed Spreading Chart

Dial settings are approximate only. Spreading at one half rate in cross directions is usually recommended.

Manufacturer and Product	Manufacturer's Bag Rate		Micro-Dial Settings		Spread Width (In feet based on brisk walking)
	Bag Weight	Sq. Ft. Coverage	Full Rate Once over	Half rate Twice over	
Bent Grass or Red Top	0.5#	1,000	1.25		4
	1#	1,000	2.0		4
	2#	1,000	2.5		4
Park, Merion, Delta, or Kentucky Bluegrass	0.5#	1,000	2.5		4
	1#	1,000	3.0		4
	2#	1,000	3.5		4
Hulled Bermuda	2#	1,000	2.75	2.25	6
	3#	1,000	3.0	2.5	6
	4#	1,000	3.25	2.75	6
Mixtures including coarse seeds	2#	1,000	6.0		6
	4#	1,000	7.0		6
	6#	1,000	7.0		6
Rye Grasses or Tall Fescue	2#	1,000	6.0		6
	4#	1,000	7.0		6
	6#	1,000	7.75		6
Dichondra	4 oz.	1,000	1.9		8
	8 oz.	1,000	2.1		8
	12 oz.	1,000	2.5		8
Pensacola Bahia	4#	1,000	4.5	3.75	7
	5#	1,000	4.75	4.0	7
	6#	1,000	5.0	4.25	7

Did You Know?

Broadcast Spreading



Broadcast spreading is as old as early man. In the early days of agriculture, field seeding was accomplished with hand cast broadcasting. The hand cast method of seeding was a limited factor in growing field crops that were hand seeded.



Mechanized casting came into being in 1868 when Samuel Speicher invented the Hand Crank "Cyclone" Seeder.

The seed sower was a breakthrough in field seeding. It was hailed as a major advancement in agricultural implements.



Paul Speicher put the hand crank seeder on wheels in 1955.

This development ushered in a new era in spreading and spreading products. New products and product forms adapted to broadcast spreading were developed.



In 1988 a new dimension was added to broadcast spreading - SPREAD PATTERN CONTROL - a dead center spread pattern equalizer.

Spyker's Accuway® spread pattern equalizer solves a complicated problem with a fundamental patented solution.

THERE'S MORE TO A SPREADER THAN MEETS THE EYE — LOTS MORE

Spreadability

Dial-a-matic regulator ensures exact spread rate. Accuway® Spread Pattern Equalizer assures exact placement of the spread pattern - Bull's Eye - dead to the center of the spreader. All products - All spreading conditions. Skewing is eliminated.


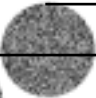

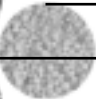

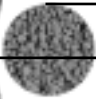

Durability

288 series spreaders will survive use and abuse. Welded steel construction is double braced, finished in baked on powder coated enamel. Generous use of highest quality stainless steel. Guaranteed metal gears.

Reliability You can count on.

Accuway® spread control system is so innovative, it's patented. So successful it's used on all Spyker 288 Super spreaders.

Dial settings are approximate only.

Product	Lbs. per 1000 Sq. Ft.	Full Rate	Half Rate
 Fine Pellets	1	3.6	3.1
	2	4.0	3.5
	3	4.2	3.7
 Mixed Fine Pellets	2	3.7	3.2
	4	4.7	4.1
	6	5.2	4.5
 Small Pellets	2	3	2.2
	4	4.2	3.7
	6	4.5	4
 Nitrogen Pellets Med.	1	3.5	3
	2	4.2	3.7
	3	4.7	4
 Med. Pellets & Granules	2	3.5	3
	4	4.2	3.8
	6	5.2	4.5
 Med. Pellets	2	3.5	3
	4	4.2	3.8
	6	5.2	4.5
 Large Heavy Pellets	2	3.8	3.3
	4	4.9	4.1
	6	5.9	4.9

Operating Instructions

Model 288 Super

The Mulch-n-More 288 Super series all operate basically the same. All 288 Super spreaders have solid stainless axle, metal drive gears and welded frames making this the most durable, long lasting ground driven spreader on the market today.

The following is a description of Mulch-n-More 288 Super series operating instructions...

All units come standard with a regular spinner blade for spreading seed, fertilizer, granular chemical products and other lower rate granular products.

There are a variety of optional attachments for the 288 Super...

1. Mulch Spinner Blade... Used for spreading a variety of products from Pellet Mulch such as PennMulch® to Dry Sand, Salt and other difficult to spread high volume or large particle products. With Spyker's patent pending removable spinner blade you can change to mulch blade in a matter of seconds. All other spreaders that are on the market require the removal of the hopper to access the spinner blade which can take as long as 1/2 to 1 hour to do. No other spreader company manufactures a "mulch basket spinner blade" for use with high volume products.

2. Calibration Pan... Used for calibrating the Turf product for accurate spreading to reduce waste and increase effectiveness of the product. This is the latest, greatest attachment for the 288 Super. Calibrate without moving the spreader.
3. Border Patrol... Used for guarding collars, greens, flower beds, driveways and sidewalks from fertilizer or pesticide materials. Stop flow to one side. Easily turned on and off with your foot while continuing to spread.
4. Barrier Shield... For use with ice melt products and salt to deflect the product down on to the sidewalk (3' width pattern) essentially converting the rotary spreader to a drop spreader for sidewalks.

Simply put the "Accuway Control" deflects the material you are spreading to another area on the spinner blade thereby adjusting your spread pattern to dead center.

1. The 288 Super spreaders have a standard "Spyker" 1-9 spreader setting knob located on the front (material distribution side) of the spreader. Simply dial the setting and you're ready to spread. Even better, choose a setting and calibrate using the optional 'calibration tray' and calibration instructions included with your spreader.
2. All 288 Super spreaders have controls on the handle. The lever on the right side is the gate open and shut control. Forward is open and backward is closed.
3. The lever on the left side of the handle is called the "Accuway Control". This lever controls the spread pattern of the product. To operate the "Accuway Control" push the left control handle all of the way forward prior to spreading the product. As you spread, if the spread pattern is skewing or flowing heavy to one side, slowly pull back on the left lever (VERY SLOWLY). As you pull the lever back towards you, you will begin to see the spread pattern change or go to center. When you see the pattern you wish to have, stop pulling the lever. You are set and no further adjustments are needed for the product you are spreading.
4. If you lose the setting on the "Accuway Control" simply push the lever forward again and slowly pull back on the left lever until the pattern is where you would like it to be.

Note: Over adjusting the "Accuway Control" lever can block the flow of fertilizer completely. Follow step 4 if you are not sure where the Accuway Deflector is located.

Operating at the Mulch Setting

1. You will notice a slot in the spreader setting dial control right where the 9 is or was located. Simply dial the setting so that the metal guide will go through this dial slot when you move the right control lever.
2. The spreader opening will now move all of the way open to the maximum opening that the spreader can achieve.
3. This setting was basically designed to spread PennMulch® at 70-75 lbs. per thousand square feet at 2.5 miles per hour. It's easy enough to check and adjust your walking speed. See Mulch-n-More calibration instructions "Calculating your walking speed".
4. The "all of the way open" setting can also be used to spread dry sand, dry organic top dresses and fertilizers, salt and ice melt products and other normally difficult to spread products.
5. When using the mulch setting you can gate the flow of the material as you're spreading. For salt, sand and top dress materials in which an accurate setting is not critical simply watch the flow of material as it comes out of the spreader. Either open more or close off (gate the flow) until you feel comfortable with the amount of material you are spreading. If you would like to check the flow rate simply mark the position of the control lever with a piece of tape and use the calibration bucket to check the coverage per thousand square feet. (See the calibration instructions included with the calibration bucket or "Calibrating the Mulch-n-More" on the www.spyker.com web site.)
6. Through trials involving mass flow products such as sand and salt we have found that using the "mulch basket" gives you the best spread pattern. Although the spread will be slightly to the right using the mulch basket, the actual spread of the product is even all of the way across the effective spread width. Depending on the type of product you're spreading, using a standard spinner blade the product will flow heavy to the left and give you a less than desirable spread pattern leaving a heavy line of product in one spot and light at another. This is the exact reason Spyker developed the Mulch spinner blade. No other ground driven spreader has the capability of spreading materials at these high rates because they all use a standard spinner blade.

Changing the Spinner Blade

1. Simply remove the special "spring pin" from the spinner shaft that holds the regular spinner blade onto the spinner shaft. Lift the stainless collar that holds the shaft together.
2. Slide the shaft upwards a few inches and remove the blade from the shaft.
3. Slide the Mulch Basket onto the shaft, slide the collar back onto the shaft under the blade, re-connect the shaft and slide the collar over the break in the shaft.
4. Put the "spring pin" in the lower hole on the shaft (for the Mulch Basket) and clip the spring onto the shaft using the hook. The "spring pin" holds the spinner blade in place and stops the collar from moving upwards so that the shaft will not separate.
5. Reverse instructions for replacing the regular spinner blade. The only difference would be that you must pin the regular blade using the upper hole on the spinner shaft. It's easy. The upper hole is for the regular spinner blade, the lower hole is for the Mulch Basket.

1 YEAR LIMITED WARRANTY

This is warranted to the original purchaser only. Spyker will replace parts with defects in materials or workmanship, for a period of one year from the date of purchase.

*For Spyker Spreaders LLC, products employing metal gear systems, pinion and bevel, these metal gears, only, not inclusive of any other parts or materials, are warranted for the life of the spreader, not to be used for replacement or repair past original purchase.

Spyker Spreaders LLC will not be liable for any loss, damage or expense including, but not limited to, consequential or incidental damages, arising from the operation, condition or use of the item. The sole and exclusive remedy against Spyker Spreaders LLC being the replacement of the defective parts. This warranty gives you specific legal rights, and you may also have other rights which vary from state to state.

THIS EXPRESS WARRANTY, WHICH IS APPLICABLE ONLY TO THE ORIGINAL PURCHASE, IS IN LIEU OF AND EXCLUDES ALL OTHER WARRANTIES, WHETHER EXPRESSED OR IMPLIED BY OPERATION OF LAW OR OTHERWISE, INCLUDING ANY WARRANTY OF MERCHANTABILITY OR FITNESS FOR PARTICULAR PURPOSE.



SPYKER SPREADERS LLC

P.O. Box 7 • 140 Mill Street

Urbana, IN 46990 USA